



**QUICK START GUIDE**  
**WIRELESS USB TO VGA ADAPTER KIT**

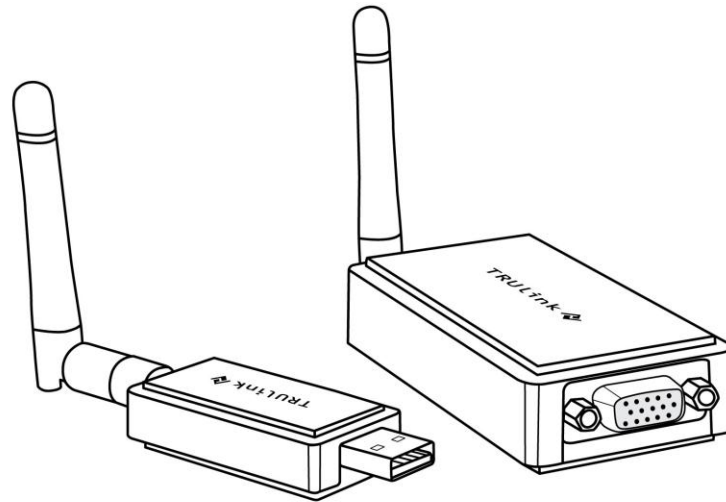
Model: 81657

# INTRODUCTION

Thank you for purchasing the TruLink™ Wireless USB To VGA Adapter Kit. This Quick Start Guide will assist you in setting up your unit properly. For instructions on adjusting settings and product specification information, please refer to the User Guide which is included in the package. **We recommend that you read this Quick Start Guide thoroughly and retain for future reference.**

# FEATURES

- ❖ Supports high resolution UXGA video of 1600 x 1200 at distances up to 10 metres
- ❖ Works in both extended desktop and mirror screen modes
- ❖ Supports native mode for playback of high resolution video
- ❖ Up to six computers can share one wireless display
- ❖ Supports video streaming at up to 720p
- ❖ Operates in WiMedia Band Group 1 frequency range (4.2 GHz to 4.8 GHz)
- ❖ Certified Wireless USB 1.0 compliant
- ❖ WiMedia 1.0 MAC & 1.1 PHY compliant



# SYSTEM REQUIREMENTS

- ❖ Microsoft® Windows® XP 32-bit with Service Pack 3 or higher
- ❖ or Microsoft® Vista® 32-bit/64-bit
- ❖ VGA cable to connect from the Wireless VGA Device Adapter to your display device

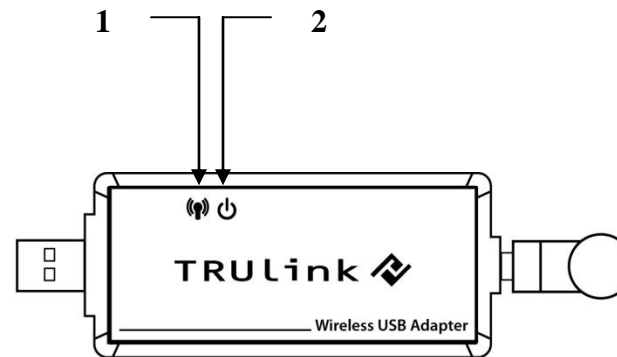
# PACKAGE CONTENTS

- ❖ Wireless USB Host Adapter for your computer
- ❖ Wireless VGA Device Adapter for your display
- ❖ Two (2) Dipole Antennae (one for each adapter)
- ❖ 1 m USB A Male/Mini-B Male Cable
- ❖ USB Extender with Cradle
- ❖ One (1) Power Adapter (cord approx. 1.2 m)
- ❖ Pin-Association Stickers
- ❖ User Guide
- ❖ Quick Start Guide
- ❖ Driver CD w/Electronic User Guide

# DEVICE OVERVIEW

## WIRELESS USB HOST ADAPTER

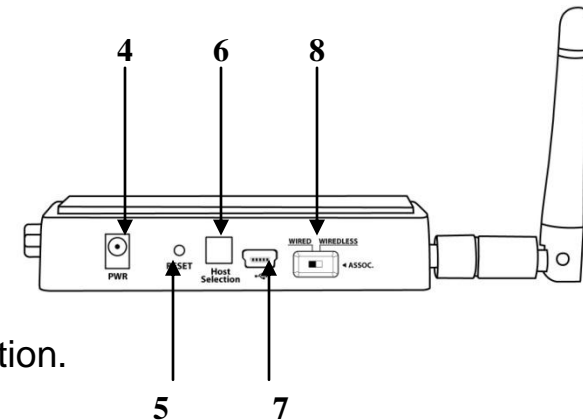
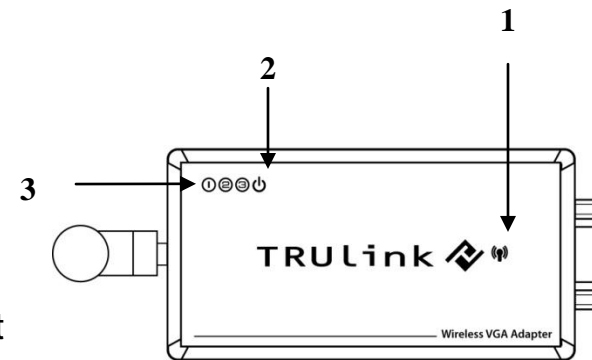
1. Link: Data Connection Indicator
  - LED is solid when transfer device is connected.
  - LED blinks when data is being transferred.
2. PWR: Power
  - LED is solid when powered by the PC.



## DEVICE OVERVIEW

### WIRELESS VGA DEVICE ADAPTER

1. VGA : VGA Activity Indicator
  - LED is solid when display cable is connected.
  - LED blinks when data is being transferred.
2. PWR: Power Indicator
  - LED is solid when power is applied.
3. 1-2-3: Status Indicator
  - Illuminated number/s indicates the Wireless USB host adapter that is currently synched with the Wireless VGA Device Adapter.
4. PWR plug
  - Power adapter socket
5. RESET
  - Association history can be deleted by pressing and holding this button for 10 seconds.
6. HOST
  - This button is used to select a different Wireless USB host adapter.
7. USB connector
  - In wireless mode, this connector is used for cable association.
  - In wired mode, this connector is used for wired operation.
8. WIRELESS/WIRED switch
  - Choose from wired or wireless mode by using this switch.



# SOFTWARE/DEVICE INSTALLATION

## IMPORTANT NOTE:

- **If installing on Windows XP, Service Pack 3 (SP3) is required. Verify that this has been installed before installing the Wireless USB To VGA Adapter Kit software.**
- **Before installing the software, make sure that the Wireless USB Host Adapter and the Wireless VGA Device Adapter are not connected to the computer and the Wireless VGA Device Adapter is switched on.**

## STEP 1-INSTALLING THE SOFTWARE

Insert the CD provided and the software will run automatically. Please follow the instructions on the InstallShield Wizard to proceed through the software installation.



## SOFTWARE/DEVICE INSTALLATION

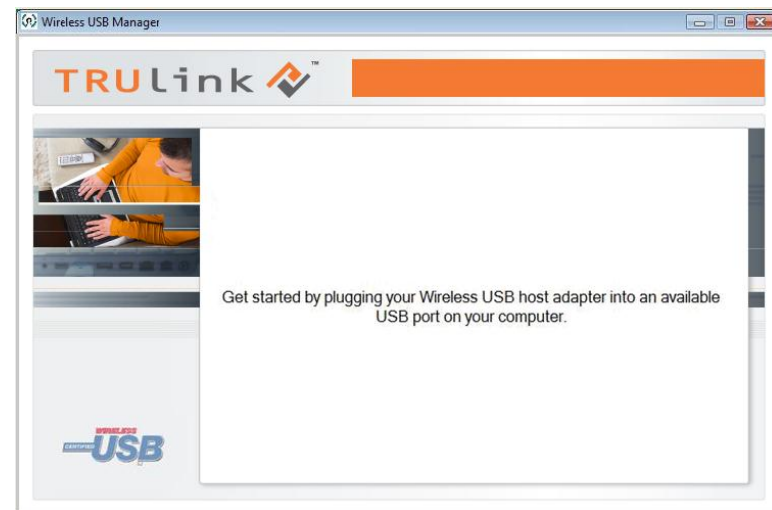
### STEP 2 -DRIVER INSTALLATION FOR THE WIRELESS USB HOST ADAPTER

Your Wireless USB to VGA Adapter Kit has been pre-associated for you, meaning the Wireless USB Host Adapter will automatically recognise the Wireless VGA Device Adapter upon being switched on. After software installation, you should see the Wireless USB Manager icon in your Windows icon tray. Double-click on this icon to open the manager utility.

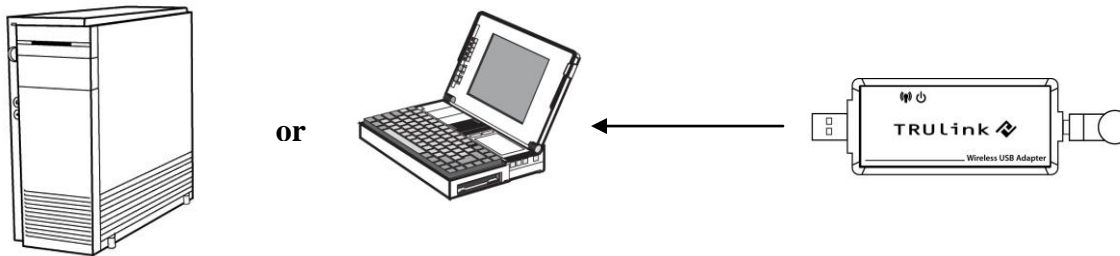


Figure: Wireless USB Manager

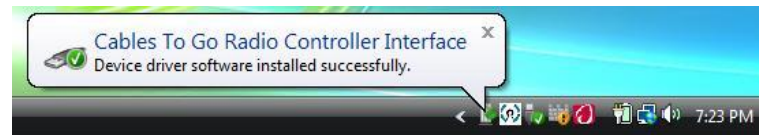
The Wireless USB Manager will open and instruct you on what to do next. Screw on one of the supplied dipole antennae to the Wireless USB Host Adapter and connect the Wireless USB Host Adapter to an available USB port on your computer. You also have the option of connecting the Wireless USB Host Adapter to the USB Cradle provided in the package if you need to make the adapter more mobile.



## SOFTWARE/DEVICE INSTALLATION



After you connect the Host Adapter to your computer, Windows will automatically install the Wireless USB Host Adapter and you should get a successful install message in your icon tray as shown in the below figure.

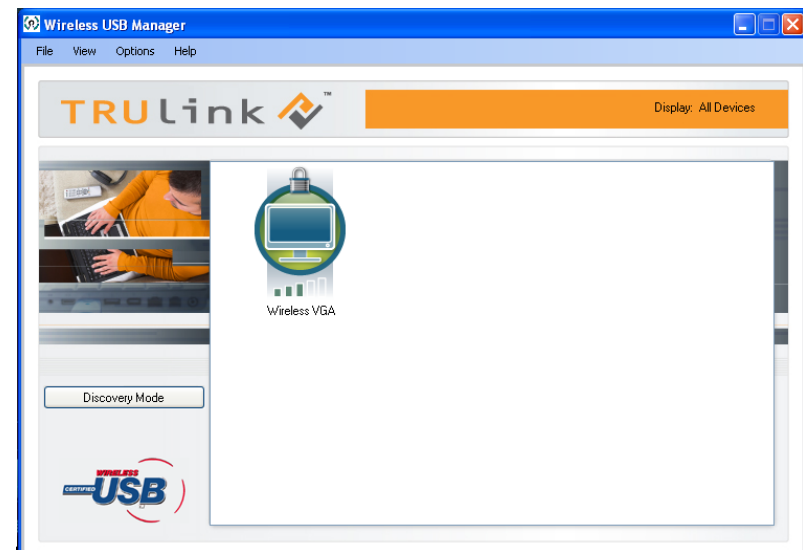
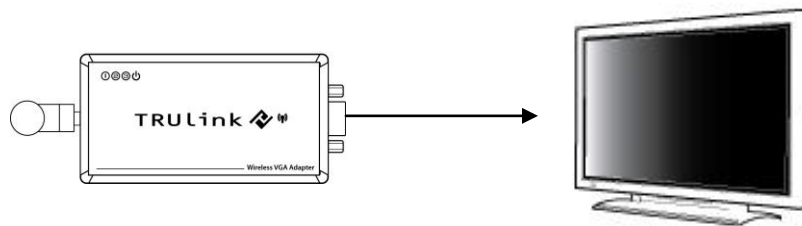


**Figure: Successful Install Message**

## SOFTWARE/DEVICE INSTALLATION

### STEP 3 – DEVICE INSTALLATION FOR THE WIRELESS VGA DEVICE ADAPTER

1. Connect the other dipole antenna to the Wireless VGA Device Adapter.
2. Switch your display device on (i.e. monitor, projector, television).
3. Using a VGA cable, connect the Wireless VGA Device Adapter to your display device, and then plug in the power adapter to the Wireless VGA Device Adapter. Windows will automatically install the hardware and you should see a successful install message in your icon tray. The Activity Indicators on the Wireless USB Host Adapter and the Wireless VGA Device Adapter should both be lit up in blue. You will also see the Wireless VGA icon in colour in the Wireless USB Manager and on the Display Devices screen.



**Figure: Wireless VGA Adapter Connected**

## **SOFTWARE/DEVICE INSTALLATION**

After the Activity Indicators come on, the TruLink DisplayLink Manager utility will activate and install an icon in the Windows icon tray. Your TruLink Wireless USB To VGA Adapter Kit is now fully functional and you are ready to use it.

**Note:** The default setting extends your desktop to the right, so you should see the desktop background on the wireless display device but you will not see any icons initially. You can continue to use it in this setting, allowing you to open applications and documents on the wireless display device to increase your viewing area, or this can be switched to “Mirror” mode to clone your main display image. Settings are discussed further in the next section.



**For more information on this product or to check for updated drivers, manuals or frequently asked questions please visit our website.**

**[www.c2g.com](http://www.c2g.com)**



**GET CONNECTED**

**VER. 2.1.04.02.12**