



# NETWORKING SOLUTIONS

Networking Products by Cables To Go™ support the rigorous demands of enterprise applications. From 10Gb Aqua Fibre and LSZH Fibre to Cat6 and Cat5e Cables, Cables To Go has the products to keep up with your ever-increasing need for bandwidth

Our solutions include both standard and custom copper and fibre cables all available for quick delivery and backed by customer support unparalleled in the marketplace.

If you are looking for a cable in a specific colour or length, give us a call. Our experienced sales team can help create the exact solution for your application.

## Custom Fibre Solutions

- With no fibre preparation, termination kits or specialised termination training required, Custom Fibre Solutions from Cables To Go save installers time and money
- Pulling eyes, identification labels and spooled solutions reduce the amount of installation time
- Improved optical performance
- Cables are fully tested and ready for installation
- Factory terminated connectors provide improved end-to-end performance
- Custom Fibre Solutions from Cables To Go reduce waste caused by improper field termination
- Reduce the overhead required to outfit field installers with multiple types of fibre, connectors and tools
- Custom pre-terminated Fibre solutions ship in as little as three business days

### Custom Fibre Options Include

- 62.5/125 and 50/125 Multimode Fibre
- 10 Gigabit Laser Optimised 50/125 Multimode Fibre (LOMMF)
- 9/125 Single-Mode Fibre
- Mode Conditioning Patch Cables
- Multi-Fibre Solutions (Pre-terms)
- MTP Trunk and Break-Out Cables
- Custom Solutions for Plenum, Low-Smoke Zero Halogen, Direct Burial and Overhead applications
- ST, SC, LC, FC, MTRJ, Escon, MTP connectors and more
- Identification labels
- Pulling eyes
- Installer-friendly spools for faster and easier installation
- M.L. spec are also available

### Fibre Count & Construction

- 1-288 Strands
- Simplex Cable
- Duplex Zipcord
- Multi-Strand Breakout Cable
- Distribution Cable

### Jacket Types

- PVC - Also referred to as OFNR; for use in riser applications
- Plenum - Also referred to as OFNP; for use in air spaces (plenums); when exposed to extreme heat or flames these cables do not emit toxic chlorine gases; this designation is required by the NEC to be stamped on all cable jackets that meet this rating
- Other - LSZH, Armored Direct Burial

### Custom Fibre Configuration Made Easy

Cables To Go makes it easy for resellers to configure basic fibre patch cables. Answer the questions below and call Cables To Go at 0800.328.2916, where a friendly sales representative can assist you.

#### Select Fibre Type

- 9/125 Single-Mode
- 50/125 Multimode
- 50/125 Laser Optimised Multimode
- 62.5/125 Multimode

#### Select Jacket Type

- PVC
- Plenum
- Low Smoke Zero Halogen (LSZH)

#### Select Strand Count

- Simplex (1)
- Duplex (2)
- Multiple Strands

#### Select the Connectors\* for Each End of Cable

\*LC, MTRJ, SC, ST

Note: Additional Connector Styles Available - please inquire

#### Length

- Typically in metres, but can be constructed in feet

Note: With the above information call Cables To Go at 0800.328.2916 for a custom quote and exact lead time.



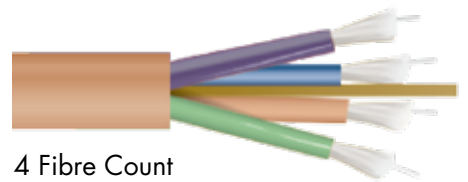
Simplex Cable



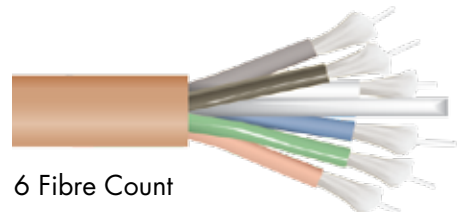
Duplex Zipcord



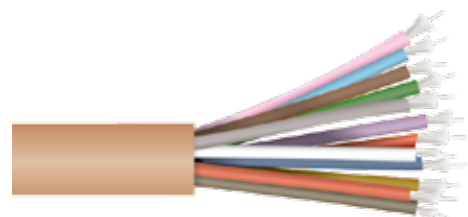
Breakout Cable/  
2 Fibre Count



4 Fibre Count



6 Fibre Count



12 Fibre Count



Distribution Cable/  
12 Fibre Count

# NETWORKING SOLUTIONS

## Duplex 62.5/125 Multimode Fibre Patch Cables

85000

### 62.5/125 micron Multimode duplex fibre patch cable

Multimode Fibre Patch Cables from Cables To Go are designed to handle network speeds up to 1000Mbps and can be used in all Multimode applications. The patented Injection Moulding Process gives each connection greater durability in resisting pulls and strains. Each cable is 100% optically inspected and tested for insertion loss before you receive it.

- The pull-proof jacket design surrounds the 62.5/125 Multimode fibre
- 100% optically inspected and tested for insertion loss
- Moulded form construction
- Immune to electrical interference
- Type: Multimode, duplex



| Description                                      | ST ST | SC SC | SC ST | LC SC | LC ST | LC LC | RRP    |
|--|-------|-------|-------|-------|-------|-------|--------|
| 1m Duplex 62.5/125 Multimode Fibre Patch Cables  | 85000 | 85018 | 85036 | 85054 | 85072 | 85090 | £13.99 |
| 2m Duplex 62.5/125 Multimode Fibre Patch Cables  | 85001 | 85019 | 85037 | 85055 | 85073 | 85091 | £15.99 |
| 3m Duplex 62.5/125 Multimode Fibre Patch Cables  | 85002 | 85020 | 85038 | 85056 | 85074 | 85092 | £16.99 |
| 5m Duplex 62.5/125 Multimode Fibre Patch Cables  | 85003 | 85021 | 85039 | 85057 | 85075 | 85093 | £19.99 |
| 7m Duplex 62.5/125 Multimode Fibre Patch Cables  | 85004 | 85022 | 85040 | 85058 | 85076 | 85094 | £20.99 |
| 10m Duplex 62.5/125 Multimode Fibre Patch Cables | 85005 | 85023 | 85041 | 85059 | 85077 | 85095 | £22.99 |
| 15m Duplex 62.5/125 Multimode Fibre Patch Cables | 85006 | 85024 | 85042 | 85060 | 85078 | 85096 | £30.99 |
| 20m Duplex 62.5/125 Multimode Fibre Patch Cables | 85007 | 85025 | 85043 | 85061 | 85079 | 85097 | £37.99 |
| 30m Duplex 62.5/125 Multimode Fibre Patch Cables |       | 85026 | 85044 | 85062 | 85080 | 85098 | £48.99 |

## LSZH Duplex 62.5/125 Multimode Fibre Patch Cables

85223

### High speed fibre cables that provide protection from toxic and corrosive gasses

Low-Smoke Zero-Halogen (LSZH) Fibre Patch Cables from Cables To Go are designed to lessen the emissions of smoke and halogens when the cable is exposed to extreme temperatures. These fibre patch cables are perfect for fast Ethernet, Fibre Channel, ATM and Gigabit Ethernet applications. Use to connect fibre optic equipment to fibre optic cross-connects, interconnects and information outlets. Each cable is individually 100% optically inspected and tested for insertion loss and quality. All cables meet or exceed industry specifications.

- Provides lower loss and higher bandwidth supporting longer distances
- Perfect for use in Gigabit Ethernet applications
- Lifetime warranty against defects of materials and workmanship
- Buffer OD: 900 µm
- Jacket OD: 3.0 mm
- Attenuation @ 850 nm: 3.75 dB/km
- Attenuation @ 1310 nm: 1.5 dB/km
- Loaded min. bend radius: 5cm
- Unloaded min. bend radius: 3cm



| Description   | ST ST | SC SC | SC ST | LC SC | LC ST | LC LC | RRP    |
|---|-------|-------|-------|-------|-------|-------|--------|
| 1m LSZH Duplex 62.5/125 Multimode Fibre Patch Cables  | 85207 | 85239 | 85223 | 85255 | 85271 | 85287 | £15.99 |
| 2m LSZH Duplex 62.5/125 Multimode Fibre Patch Cables  | 85208 | 85240 | 85224 | 85256 | 85272 | 85288 | £17.99 |
| 3m LSZH Duplex 62.5/125 Multimode Fibre Patch Cables  | 85209 | 85241 | 85225 | 85257 | 85273 | 85289 | £18.99 |
| 5m LSZH Duplex 62.5/125 Multimode Fibre Patch Cables  | 85210 | 85242 | 85226 | 85258 | 85274 | 85290 | £22.99 |
| 7m LSZH Duplex 62.5/125 Multimode Fibre Patch Cables  | 85211 | 85243 | 85227 | 85259 | 85275 | 85291 | £23.99 |
| 10m LSZH Duplex 62.5/125 Multimode Fibre Patch Cables | 85212 | 85244 | 85228 | 85260 | 85276 | 85292 | £26.99 |

## Duplex 50/125 Multimode Fibre Patch Cables

85144

### For your high-speed Multimode fibre applications

Get more bandwidth and higher transmission rates over longer distances with 50/125 Multimode fibre cables from Cables To Go. These cables provide lower loss rates than standard 62.5/125 fibre. Perfect for use with today's narrower aperture components, these cables are fully compatible for Multimode applications. Perfect for protocols such as Ethernet, Fibre Channel, Infiniband, ATM and Internet Protocol.

- Provides lower loss and higher bandwidth supporting longer distances
- Perfect for use in Gigabit Ethernet applications
- Lifetime warranty against defects of materials and workmanship
- Buffer material: PVC
- Buffer OD: 900 µm
- Jacket material: PVC (OFNR-rated)
- Jacket OD: 3.0 mm
- Jacket colour: Orange
- Attenuation @ 850 nm: 3.75 dB/km
- Attenuation @ 1310 nm: 1.5 dB/km
- Min. bandwidth @ 850 nm: 160 kHz/km
- Min. bandwidth @ 1310 nm: 500 kHz/km
- Maximum tensile load: 100 N/cm
- Loaded min. bend radius: 5cm
- Unloaded min. bend radius: 3cm
- Crush resistance: 750 N/cm
- Impact resistance: 1000 cycles
- Flex resistance: 5000 cycles



| Description                         | SC SC | LC SC | LC LC | RRP    |
|-------------------------------------|-------|-------|-------|--------|
| 1m Duplex 50/125 Fibre Patch Cable  | 85108 | 85126 | 85144 | £16.99 |
| 2m Duplex 50/125 Fibre Patch Cable  | 85109 | 85127 | 85145 | £18.99 |
| 3m Duplex 50/125 Fibre Patch Cable  | 85110 | 85128 | 85146 | £22.99 |
| 5m Duplex 50/125 Fibre Patch Cable  | 85111 | 85129 | 85147 | £25.99 |
| 7m Duplex 50/125 Fibre Patch Cable  | 85112 | 85130 | 85148 | £26.99 |
| 10m Duplex 50/125 Fibre Patch Cable | 85113 | 85131 | 85149 | £28.99 |
| 15m Duplex 50/125 Fibre Patch Cable | 85114 | 85132 | 85150 | £38.99 |
| 20m Duplex 50/125 Fibre Patch Cable | 85115 | 85133 | 85151 | £48.99 |

## LSZH Duplex 50/125 Multimode Fibre Patch Cables

85319

**High speed Multimode fibre cables that provide protection from toxic and corrosive gasses**

Low-Smoke Zero-Halogen (LSZH) Fibre Patch Cables from Cables To Go are designed to lessen the emissions of smoke and halogens when the cable is exposed to extreme temperatures. These fibre patch cables are perfect for fast Ethernet, Fibre Channel, ATM and Gigabit Ethernet applications. Use to connect fibre optic equipment to fibre optic cross-connects, interconnects and information outlets. Each cable is individually 100% optically inspected and tested for insertion loss and quality. All cables meet or exceed industry specifications.

- Fully compatible with Multimode fibre applications
- Provides lower loss and higher bandwidth supporting longer distances
- Perfect for use in Gigabit Ethernet applications
- Lifetime warranty against defects of materials and workmanship
- Buffer OD: 900 µm
- Jacket OD: 3.0 mm
- Jacket colour: Orange
- Attenuation @ 850 nm: 3.75 dB/km
- Attenuation @ 1310 nm: 1.5 dB/km
- Min. bandwidth @ 850 nm: 160 kHz/km
- Min. bandwidth @ 1310 nm: 500 kHz/km
- Maximum tensile load: 100 N/cm
- Loaded min. bend radius: 5cm
- Unloaded min. bend radius: 3cm
- Crush resistance: 750 N/cm
- Impact resistance: 1000 cycles
- Flex resistance: 500



| Description                        | SC SC | LC SC | LC LC | RRP    |
|------------------------------------|-------|-------|-------|--------|
| 1m LSZH Duplex 50/125 Fibre Patch  | 85303 | 85319 | 85335 | £18.99 |
| 2m LSZH Duplex 50/125 Fibre Patch  | 85304 | 85320 | 85336 | £21.99 |
| 3m LSZH Duplex 50/125 Fibre Patch  | 85305 | 85321 | 85337 | £25.99 |
| 5m LSZH Duplex 50/125 Fibre Patch  | 85306 | 85322 | 85338 | £28.99 |
| 7m LSZH Duplex 50/125 Fibre Patch  | 85307 | 85323 | 85339 | £30.99 |
| 10m LSZH Duplex 50/125 Fibre Patch | 85308 | 85324 | 85340 | £33.99 |

## 10Gb Duplex 50/125 Multimode Fibre Patch Cables

85162

**Laser-optimised 50 micron aqua fibre for LED/VCSEL laser light sources and 10-Gigabit applications**

Blazing-fast 10-Gigabit performance with Laser-Optimised 50/125 Multimode Fibre Patch Cables from Cables To Go provide backward compatibility with existing 50/125 equipment and provide the performance flexibility required to support laser light sources and 10-Gigabit applications.

- Fully compatible with 50/125 Multimode fibre applications
- Use with both LED and VCSEL laser light sources
- Designed for use in 10-Gigabit Ethernet applications
- Lifetime warranty against defects of materials and workmanship
- Optical Multimode 3 (OM3) fibre supporting 2000 MHz.km EMB at 850 nm
- 10 Gigabit transfers up to 300m using 850 nm VCSEL source
- Jacket material: PVC (OFNR-rated)
- Jacket colour: Aqua



| Description                        | SC SC | LC SC | LC LC | RRP    |
|------------------------------------|-------|-------|-------|--------|
| 1m 10Gb Duplex 50/125 Fibre Patch  | 85162 | 85177 | 85192 | £18.99 |
| 2m 10Gb Duplex 50/125 Fibre Patch  | 85163 | 85178 | 85193 | £21.99 |
| 3m 10Gb Duplex 50/125 Fibre Patch  | 85164 | 85179 | 85194 | £25.99 |
| 5m 10Gb Duplex 50/125 Fibre Patch  | 85165 | 85180 | 85195 | £28.99 |
| 10m 10Gb Duplex 50/125 Fibre Patch | 85166 | 85181 | 85196 | £33.99 |

## Duplex 9/125 Single-Mode Fibre Patch Cables

85351

**For your high speed Single-Mode fibre applications**

Get the performance you demand at an affordable price with 9/125 Single-Mode Fibre Patch Cables from Cables To Go. Perfect for high bandwidth applications requiring high transmission rates over longer distances. These cables provide cost-effective solutions for use with today's high speed networks and flexibility to grow with tomorrow's higher bandwidth requirements.

- Provides lower loss and higher bandwidth supporting longer distances
- Perfect for use in Gigabit Ethernet applications
- Flexibility to grow with tomorrow's higher bandwidth needs
- Lifetime warranty against defects of materials and workmanship
- Buffer material: PVC
- Buffer OD: 900 µm
- Jacket material: PVC (OFNR-rated)
- Jacket OD: 3.0mm
- Attenuation @ 1310 nm: 1.0 dB/km
- Attenuation @ 1550 nm: 0.75 dB/km
- Loaded min. bend radius: 5cm
- Unloaded min. bend radius: 3cm



| Description                                     | ST ST | SC ST | SC SC | LC ST | LC SC | LC LC | RRP    |
|---|-------|-------|-------|-------|-------|-------|--------|
| 1m Duplex 9/125 Single-Mode Fibre Patch Cables  | 85351 | 85367 | 85383 | 85399 | 85415 | 85431 | £18.99 |
| 2m Duplex 9/125 Single-Mode Fibre Patch Cables  | 85352 | 85368 | 85384 | 85400 | 85416 | 85432 | £23.99 |
| 3m Duplex 9/125 Single-Mode Fibre Patch Cables  | 85353 | 85369 | 85385 | 85401 | 85417 | 85433 | £25.99 |
| 5m Duplex 9/125 Single-Mode Fibre Patch Cables  | 85354 | 85370 | 85386 | 85402 | 85418 | 85434 | £28.99 |
| 7m Duplex 9/125 Single-Mode Fibre Patch Cables  | 85355 | 85371 | 85387 | 85403 | 85419 | 85435 | £30.99 |
| 10m Duplex 9/125 Single-Mode Fibre Patch Cables | 85356 | 85372 | 85388 | 85404 | 85420 | 85436 | £32.99 |

# NETWORKING SOLUTIONS

## Cat6 550MHz Snagless Patch Cables

83365

### 550MHz high bandwidth network cable with a snagless design

More room for your information to travel at faster speeds. Designed to handle the high bandwidth needs of transferring video, sound and data, Cat6 is the next generation of network cables. The moulded, snagless boot prevents unwanted cable snags during installation and provides strain-relief. A perfect replacement for your Cat5E cable when it no longer is able to meet system requirements. Cat6 550 Mhz Snagless Patch Cables from Cables To Go are available in a variety of colours to easily colour-code your network installation.

- Connector: 50-micron gold plated RJ-45 Male to Male
- Conductor: 24AWG Stranded Copper
- Jacket: PVC
- Gigabit 1000 BASE-T; 100 BASE-T; 10 BASE-T (IEEE 802.3)
- 4/16 Mbps Token Ring (IEEE 802.5); 100 VG-AnyLAN
- 100 Mbps TP-PMD (ANSI X3T9.5); 55/155 Mbps ATM



| Description                           | Grey  | Blue  | Black | Green | Red   | Yellow | White | Orange | Pink  | Purple | Brown | RRP    |
|---------------------------------------|-------|-------|-------|-------|-------|--------|-------|--------|-------|--------|-------|--------|
| .5m Cat6 550MHz Snagless Patch Cable  | 83365 | 83385 | 83405 | 83425 | 83445 | 83465  | 83485 | 83573  | 83587 | 83630  | 83644 | £3.99  |
| 1m Cat6 550MHz Snagless Patch Cable   | 83366 | 83386 | 83406 | 83426 | 83446 | 83466  | 83486 | 83574  | 83588 | 83631  | 83645 | £4.49  |
| 1.5m Cat6 550MHz Snagless Patch Cable | 83367 | 83387 | 83407 | 83427 | 83447 | 83467  | 83487 | 83575  | 83589 | 83632  | 83646 | £4.99  |
| 2m Cat6 550MHz Snagless Patch Cable   | 83368 | 83388 | 83408 | 83428 | 83448 | 83468  | 83488 | 83576  | 83590 | 83633  | 83647 | £5.99  |
| 3m Cat6 550MHz Snagless Patch Cable   | 83369 | 83389 | 83409 | 83429 | 83449 | 83469  | 83489 | 83577  | 83591 | 83634  | 83648 | £6.99  |
| 5m Cat6 550MHz Snagless Patch Cable   | 83370 | 83390 | 83410 | 83430 | 83450 | 83470  | 83490 | 83578  | 83592 | 83635  | 83649 | £8.49  |
| 7m Cat6 550MHz Snagless Patch Cable   | 83371 | 83391 | 83411 | 83431 | 83451 | 83471  | 83491 | 83579  | 83593 | 83636  | 83650 | £9.49  |
| 10m Cat6 550MHz Snagless Patch Cable  | 83372 | 83392 | 83412 | 83432 | 83452 | 83472  | 83492 | 83580  | 83594 | 83637  | 83651 | £10.99 |
| 15m Cat6 550MHz Snagless Patch Cable  | 83373 | 83393 | 83413 | 83433 | 83453 | 83473  | 83493 | 83581  | 83595 | 83638  | 83652 | £13.99 |
| 20m Cat6 550MHz Snagless Patch Cable  | 83374 | 83394 | 83414 | 83434 | 83454 | 83474  | 83494 | 83582  | 83596 | 83639  | 83653 | £17.99 |
| 30m Cat6 550MHz Snagless Patch Cable  | 83375 | 83395 | 83415 | 83435 | 83455 | 83475  | 83495 | 83583  | 83597 | 83640  | 83654 | £21.99 |

## Cat6 Snagless Crossover Patch Cables

83556

### Unparalleled performance for peer-to-peer and crossover applications

Cat6 Crossover Cables from Cables To Go are perfect for distributing data, voice, video and connecting network switches and hubs without an uplink port to other switches and hubs. 550MHz rated patch cables ensure that you always have the necessary throughput to handle bandwidth-intensive applications. Note: These cables are for 10/100 Ethernet only and will not work for gigabit ethernet as only two pairs of this cable are crossed. Our new moulded, snag-free clip prevents unwanted cable snags during installation and doesn't impair the ability to insert and remove the connector from the port. It also provides extraordinary strain-relief, so that the cable is not damaged.

- Crossed pin configuration allows you to connect two computers peer-to-peer without the need for a hub or switch
- Each cable is fully tested and quality inspected, ensuring all EIA/TIA Cat 6 TIA/EIA- 568-B-2.1
- Drastically reduces both impedance and structural return loss (SRL) as compared to standard 100MHz wire, which ensures error-free transmission
- Constructed with high quality cable and a shortened body plug, this design will keep Near-End Crosstalk (NEXT) levels to a minimum
- Connector: 50-micron gold plated RJ-45 Male to Male
- Conductor: 24AWG Stranded Copper
- Jacket: PVC



| Description                     | Grey  | Blue  | Black | Red   | RRP   |
|---------------------------------|-------|-------|-------|-------|-------|
| .5m Cat6 Crossover Patch Cable  | 83505 | 83522 | 83539 | 83556 | £3.99 |
| 1m Cat6 Crossover Patch Cable   | 83506 | 83523 | 83540 | 83557 | £4.49 |
| 1.5m Cat6 Crossover Patch Cable | 83507 | 83524 | 83541 | 83558 | £4.99 |
| 2m Cat6 Crossover Patch Cable   | 83508 | 83525 | 83542 | 83559 | £5.99 |
| 3m Cat6 Crossover Patch Cable   | 83509 | 83526 | 83543 | 83560 | £6.99 |
| 5m Cat6 Crossover Patch Cable   | 83510 | 83527 | 83544 | 83561 | £8.49 |
| 7m Cat6 Crossover Patch Cable   | 83511 | 83528 | 83545 | 83562 | £9.49 |

## Cat5e 350MHz Snagless Patch Cables

83658

### Snagless moulded patch cables for high performance networking applications

Enhanced Cat5e 350MHz Snagless Patch Cables from Cables To Go distribute data, voice and video. These cables handle bandwidth intensive applications up to 350MHz and meet all Cat5E TIA/EIA standards. The moulded, snag-free boot prevents unwanted cable snags during installation and provides extra strain-relief. Available in a variety of colours to easily colour-code your network installation.

- Keeps Near-End Crosstalk (NEXT) levels to a minimum and drastically reduces both impedance and structural return loss (SRL)
- Connector: 50-micron gold-plated RJ-45 Male to Male
- Conductor: 4-pair 24AWG Stranded Copper Jacket: PVC
- 1000 BASE-T; 100 BASE-T; 10 BASE-T (IEEE 802.3)
- 4/16 Mbps Token Ring (IEEE 802.5); 100 VG-AnyLAN
- 100 Mbps TP-PMD (ANSI X3T9.5); 55/155 Mbps ATM
- Voice Wired: TSB 568B (T 258A)



| Description                            | Grey  | Blue  | Black | Green | Red   | Yellow | White | Orange | Pink  | Purple | Brown | RRP    |
|--|-------|-------|-------|-------|-------|--------|-------|--------|-------|--------|-------|--------|
| .5m Cat5e 350MHz Snagless Patch Cable  | 83140 | 83160 | 83180 | 83200 | 83220 | 83240  | 83260 | 83602  | 83616 | 83658  | 83672 | £2.49  |
| 1m Cat5e 350MHz Snagless Patch Cable   | 83141 | 83161 | 83181 | 83201 | 83221 | 83241  | 83261 | 83603  | 83617 | 83659  | 83673 | £2.99  |
| 1.5m Cat5e 350MHz Snagless Patch Cable | 83142 | 83162 | 83182 | 83202 | 83222 | 83242  | 83262 | 83604  | 83618 | 83660  | 83674 | £3.49  |
| 2m Cat5e 350MHz Snagless Patch Cable   | 83143 | 83163 | 83183 | 83203 | 83223 | 83243  | 83263 | 83605  | 83619 | 83661  | 83675 | £3.99  |
| 3m Cat5e 350MHz Snagless Patch Cable   | 83144 | 83164 | 83184 | 83204 | 83224 | 83244  | 83264 | 83606  | 83620 | 83662  | 83676 | £4.99  |
| 5m Cat5e 350MHz Snagless Patch Cable   | 83145 | 83165 | 83185 | 83205 | 83225 | 83245  | 83265 | 83607  | 83621 | 83663  | 83677 | £5.99  |
| 7m Cat5e 350MHz Snagless Patch Cable   | 83146 | 83166 | 83186 | 83206 | 83226 | 83246  | 83266 | 83608  | 83622 | 83664  | 83678 | £6.99  |
| 10m Cat5e 350MHz Snagless Patch Cable  | 83147 | 83167 | 83187 | 83207 | 83227 | 83247  | 83267 | 83609  | 83623 | 83665  | 83679 | £7.99  |
| 15m Cat5e 350MHz Snagless Patch Cable  | 83148 | 83168 | 83188 | 83208 | 83228 | 83248  | 83268 | 83610  | 83624 | 83666  | 83680 | £9.99  |
| 20m Cat5e 350MHz Snagless Patch Cable  | 83149 | 83169 | 83189 | 83209 | 83229 | 83249  | 83269 | 83611  | 83625 | 83667  | 83681 | £12.99 |
| 30m Cat5e 350MHz Snagless Patch Cable  | 83150 | 83170 | 83190 | 83210 | 83230 | 83250  | 83270 | 83612  | 83626 | 83668  | 83682 | £17.99 |

## Cat5e 350MHz Assembled Patch Cables

83080

High performance networking cables that distributes data, voice and video

Perfect for your home office or a large installation project, Enhanced Cat5e 350MHz Assembled Patch Cables from Cables To Go distribute data, voice and video over advanced Ethernet and Gigabit computer networks. These cables will handle bandwidth intensive applications up to 350MHz and beyond. Cables To Go 350MHz patch cables are available in a variety of colours to easily colour-code your network installation.

- Designed for Network adapters, hubs, switches, routers, DSL/cable modems, patch panels and other twisted-pair applications
- Connector: 50-micron gold plated RJ-45 Male to Male
- Conductor: 4-pair 24AWG Stranded Copper Jacket: PVC
- 1000 BASE-T; 100 BASE-T; 10 BASE-T (IEEE 802.3)
- 4/16 Mbps Token Ring (IEEE 802.5); 100 VG-AnyLAN
- 100 Mbps TP-PMD (ANSI X3T9.5); 55/155 Mbps ATM



| Description                              | Grey  | Blue  | Black | Green | Red   | Yellow | White | RRP    |
|--|-------|-------|-------|-------|-------|--------|-------|--------|
| .5m Cat5e 350MHz Assembled Patch Cables  | 83000 | 83020 | 83040 | 83060 | 83080 | 83100  | 83120 | £1.99  |
| 1m Cat5e 350MHz Assembled Patch Cables   | 83001 | 83021 | 83041 | 83061 | 83081 | 83101  | 83121 | £2.29  |
| 1.5m Cat5e 350MHz Assembled Patch Cables | 83002 | 83022 | 83042 | 83062 | 83082 | 83102  | 83122 | £2.79  |
| 2m Cat5e 350MHz Assembled Patch Cables   | 83003 | 83023 | 83043 | 83063 | 83083 | 83103  | 83123 | £3.29  |
| 3m Cat5e 350MHz Assembled Patch Cable    | 83004 | 83024 | 83044 | 83064 | 83084 | 83104  | 83124 | £3.99  |
| 5m Cat5e 350MHz Assembled Patch Cables   | 83005 | 83025 | 83045 | 83065 | 83085 | 83105  | 83125 | £4.99  |
| 7m Cat5e 350MHz Assembled Patch Cables   | 83006 | 83026 | 83046 | 83066 | 83086 | 83106  | 83126 | £5.99  |
| 10m Cat5e 350MHz Assembled Patch Cables  | 83007 | 83027 | 83047 | 83067 | 83087 | 83107  | 83127 | £6.99  |
| 15m Cat5e 350MHz Assembled Patch Cables  | 83008 | 83028 | 83048 | 83068 | 83088 | 83108  | 83128 | £8.99  |
| 20m Cat5e 350MHz Assembled Patch Cables  | 83009 | 83029 | 83049 | 83069 | 83089 | 83109  | 83129 | £11.99 |
| 30m Cat5e 350MHz Assembled Patch Cables  | 83010 | 83030 | 83050 | 83070 | 83090 | 83110  | 83130 | £15.99 |

## Cat5e Crossover Patch Cables

83297

For hub-to-hub or peer-to-peer networking applications

With a Cables To Go Enhanced Cat5e 350MHz Crossover Patch Cable and a network adapter, you can easily network two Windows-based computers in a peer-to-peer networking configuration. In addition, this cable can be used for hub-to-hub, transceiver-to-transceiver or repeater-to-repeater Ethernet connections. Cables To Go 350MHz crossover patch cables are available in a variety of colours to easily colour-code your network installation and are labelled as crossover for easy identification.

- Designed for peer-to-peer, hub-to-hub, transceiver-to-transceiver or repeater-to-repeater Ethernet connection
- Constructed with high quality cable and a shortened body plug, this design will keep Near-End Crosstalk (NEXT) levels to a minimum
- Exceeds Category 5E specifications and drastically reduces both impedance and structural return loss (SRL)
- Connector: 50-micron gold-plated RJ-45 Male to Male
- Conductor: 4-pair 24AWG stranded copper jacket: PVC
- Exceeds Category 5e specifications
- Wired: TSB 568B (T 258A)
- Certifications: TIA/EIA
- 1000 BASE-T; 100 BASE-T; 10 BASE-T (IEEE 802.3)
- 4/16 Mbps Token Ring (IEEE 802.5); 100 VG-AnyLAN
- 100 Mbps TP-PMD (ANSI X3T9.5); 55/155 Mbps ATM



| Description                | Grey  | Blue  | Black | Red   | Yellow | RRP   |
|----------------------------|-------|-------|-------|-------|--------|-------|
| .5m Cat5e Crossover Patch  | 83280 | 83297 | 83314 | 83331 | 83348  | £2.99 |
| 1m Cat5e Crossover Patch   | 83281 | 83298 | 83315 | 83332 | 83349  | £3.49 |
| 1.5m Cat5e Crossover Patch | 83282 | 83299 | 83316 | 83333 | 83350  | £3.99 |
| 2m Cat5e Crossover Patch   | 83283 | 83300 | 83317 | 83334 | 83351  | £4.49 |
| 3m Cat5e Crossover Patch   | 83284 | 83301 | 83318 | 83335 | 83352  | £4.99 |
| 5m Cat5e Crossover Patch   | 83285 | 83302 | 83319 | 83336 | 83353  | £5.49 |
| 7m Cat5e Crossover Patch   | 83286 | 83303 | 83320 | 83337 | 83354  | £7.99 |

## Shielded Cat5e Moulded Patch Cable

83750

Protect your network data from EMI/RFI interference

Today's mission critical advanced Fast Ethernet and Gigabit computer networks require the stability and reliability of Enhanced Category 5 high-speed cabling to distribute data, voice and video. To protect your high-speed network from noise and electromagnetic interference, use Shielded Enhanced Cat5 Patch Cables from Cables To Go. The moulded boot provides extra strain-relief and durability. Cables To Go Shielded Enhanced Cat5 Patch Cables are available in a variety of colours to easily colour-code your network installation.

- Connector: Shielded 50-micron gold plated RJ45 Male to Male
- Conductor: 4-pair 24 AWG Stranded STP
- Foil shielding with drain wire
- Applications: 1000 BASE-T; 100 BASE-T; 10 BASE-T (IEEE 802.3) 4/16 Mbps Token Ring (IEEE 802.5); 100 VG-AnyLAN 100 Mbps TP-PMD (ANSI X3T9.5); 55/155 Mbps ATM Voice
- Meets or exceeds industry standards for NEXT and return loss



| Description                            | Grey  | Blue  | Red   | Yellow | Green | Black | RRP    |
|--|-------|-------|-------|--------|-------|-------|--------|
| 1m Shielded Cat5e Moulded Patch Cable  | 83750 | 83770 | 83790 | 83810  | 83830 | 83850 | £3.49  |
| 2m Shielded Cat5e Moulded Patch Cable  | 83751 | 83771 | 83791 | 83811  | 83831 | 83851 | £4.99  |
| 3m Shielded Cat5e Moulded Patch Cable  | 83752 | 83772 | 83792 | 83812  | 83832 | 83852 | £5.99  |
| 4m Shielded Cat5e Moulded Patch Cable  | 83753 | 83773 | 83793 | 83813  | 83833 | 83853 | £6.49  |
| 5m Shielded Cat5e Moulded Patch Cable  | 83754 | 83774 | 83794 | 83814  | 83834 | 83854 | £6.99  |
| 7m Shielded Cat5e Moulded Patch Cable  | 83755 | 83775 | 83795 | 83815  | 83835 | 83855 | £7.99  |
| 15m Shielded Cat5e Moulded Patch Cable | 83756 | 83776 | 83796 | 83816  | 83836 | 83856 | £10.99 |
| 20m Shielded Cat5e Moulded Patch Cable | 83757 | 83777 | 83797 | 83817  | 83837 | 83857 | £14.99 |
| 30m Shielded Cat5e Moulded Patch Cable | 83758 | 83778 | 83798 | 83818  | 83838 | 83858 | £19.99 |
| 50m Shielded Cat5e Moulded Patch Cable | 83759 | 83779 | 83799 | 83819  | 83839 | 83859 | £28.99 |

# NETWORKING SOLUTIONS

## Cat6 Bulk 550MHz Solid PVC Cables

88066

**Cat6 550MHz bulk cable is ideal for Gigabit Ethernet, broadband, audio/video and security network installations**

Cat6 550MHz bulk cable is ideal for Gigabit Ethernet, broadband, audio/video and security network installations. Whether you are wiring your home, office or an entire campus, we have the bulk cable you need for the job. Available in a PVC jacket, our cable is offered in two standard colours, blue and grey, for easy identification.

- 4-pair unshielded twisted-pair cable
- Polyethylene separator for enhanced NEXT, ELFEXT and RL Bandwidth
- 24AWG solid bare copper conductor for superior conductivity
- Meets EIA/TIA CAT6 specifications
- Durable, high-density polyethylene insulation, PVC jacket



| Bulk Cat6 Solid 550MHz              | Blue  | Grey  | RRP     |
|-------------------------------------|-------|-------|---------|
| 305m Bulk Cat6 Solid 550MHz UTP PVC | 88066 | 88067 | £149.99 |

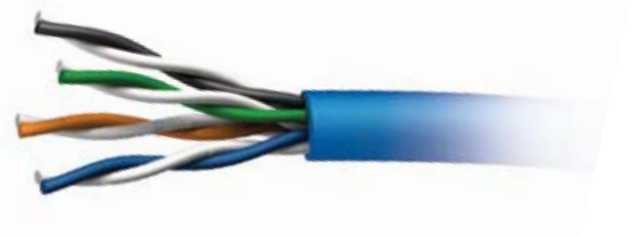
## Cat6 Bulk 350MHz Solid PVC Cable

88035

**Cat6 bulk cable is ideal for Gigabit Ethernet, broadband, audio/video and security network installations**

Cat6 bulk cable is ideal for Gigabit Ethernet, broadband, audio/video and security network installations. Whether you are wiring your home, office or an entire campus, we have the bulk cable you need for the job. Available in a PVC jacket, our cable is offered in two standard colours, blue and grey, for easy identification.

- 4-pair unshielded twisted-pair cable
- Polyethylene separator for enhanced NEXT, ELFEXT and RL Bandwidth
- 24AWG solid bare copper conductor for superior conductivity
- Meets EIA/TIA CAT6 specifications
- Durable, high-density polyethylene insulation, PVC jacket



| Bulk Cat6 Solid 350MHz              | Grey  | Blue  | RRP     |
|-------------------------------------|-------|-------|---------|
| 305m Bulk Cat6 Solid 350MHz UTP PVC | 88034 | 88035 | £109.99 |

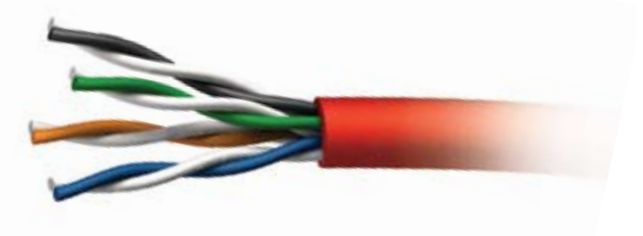
## Cat5e Bulk 350MHz Solid PVC CMR Cables

88003

**Cat5e 350MHz bulk cable from Cables To Go is ideal for your voice, data, video and security network installations**

Whether you are wiring your home, office, or an entire campus, we have the bulk cable you need to get the job done. Available in PVC and plenum-rated jackets, our 350MHz cable comes in various colors for easy identification and colour-coding.

- 4-pair unshielded twisted-pair cable
- 24AWG solid bare copper conductor
- Meets or exceeds Cat5e specifications
- High-density polyethylene insulation, PVC jacket
- Foot-marked cable packaged in EZ pull box
- CSA listed



| Bulk Cat5e Solid 350MHz   | Grey  | Blue  | White | Red   | RRP    |
|---------------------------|-------|-------|-------|-------|--------|
| 305m Cat5e 350MHz UTP PVC | 88000 | 88001 | 88002 | 88003 | £69.99 |

## Hook and Loop Cable Wrap

**Custom cut the length you need and save money!**

Painlessly organise the cabling on your audio/video equipment stack, computer desk, or in the networking closet. These hook and loop nylon ties are easy to use and reuse with their self-attaching design. The bulk size is the best way to cut costs and get the right size to handle any job.

- Custom cut the length you need and save money - no waste
- Constructed of high-strength, nylon hook and loop to securely organise cables
- Self-attaching design lets you use and reuse
- Cut off the right amount of cable wrap from the bulk reel – no waste
- 1.9cm wide
- Colour: Black
- Lifetime Warranty



| Item# | Description                         | RRP   |
|-------|-------------------------------------|-------|
| 82080 | 7.6m Hook and Loop Cable Wrap ..... | £8.99 |

## Cat5e RJ45 Modular Inline Coupler

**Designed to connect two Cat5e patch cables together**

If you are trying to link several line cords together, or extending existing modular cable runs, Cables To Go's In-line Cat5e Coupler can help you make the right connection. The in-line coupler provides a female-to-female feed-through connection for easy cable hook-up. Capable of handling LAN speeds of up to 100Mbps, meets TIA/EIA 568A and Power Sum Certified, the Cat5e coupler will meet all of your performance requirements.

- Extends the length of two Cat5e patch cables
- Connectors: One RJ-45 Female to One RJ-45 Female
- Type: Straight-Thru RJ-45 Cat5e
- Lifetime warranty
- Colour: Black



| Item# | Description                             | RRP   |
|-------|---|-------|
| 81556 | Cat5e RJ45 Modular Inline Coupler ..... | £3.49 |

## Modular Adapters

**For serial printers, terminals, modems, POS and other serial equipment**

Using Modular Adapters with inexpensive silver satin or flat oval twisted-pair wire has become a popular way to run client server applications. Many network planners have implemented modular adapters as the most cost-effective way to complete connections. Whether used in a wiring closet or throughout the office, colour-coded modular adapters from Cables To Go lend easy identification and differentiation to your cable plan. By colour-coding your connections, you cut down on troubleshooting time while taking full advantage of the benefits of this modular adapter approach.

- Cables To Go will assemble any adapter (for a nominal labour charge) to fit your application so that the adapters are ready to use upon arrival
- These modular adapters are not functional until they are assembled
- There is not a universal way to assemble them, so contact your hardware manufacturer for details



| Item# | Description                              | RRP   |
|-------|--|-------|
| 81544 | RJ45/DB9 F Modular Adapter - Grey .....  | £3.99 |
| 81545 | RJ45/DB9 F Modular Adapter - Blue .....  | £3.99 |
| 81546 | RJ45/DB9 F Modular Adapter - Black ..... | £3.99 |
| 81547 | RJ45/DB9 F Modular Adapter - Red .....   | £3.99 |
| 81548 | RJ45/DB9 M Modular Adapter - Grey .....  | £3.99 |
| 81549 | RJ45/DB9 M Modular Adapter - Blue .....  | £3.99 |
| 81550 | RJ45/DB9 M Modular Adapter - Black ..... | £3.99 |
| 81551 | RJ45/DB9 M Modular Adapter - Red .....   | £3.99 |
| 81536 | RJ45/DB15 M Modular Adapter - Grey ..... | £3.99 |
| 81537 | RJ45/DB15 F Modular Adapter - Grey ..... | £3.99 |
| 81538 | RJ45/DB25 F Modular Adapter - Grey ..... | £3.99 |

| Item# | Description                                     | RRP   |
|-------|---|-------|
| 81539 | RJ45/DB25 F Modular Adapter - Blue .....        | £3.99 |
| 81540 | RJ45/DB25 F Modular Adapter - Black .....       | £3.99 |
| 81541 | RJ45/DB25 M Modular Adapter - Grey .....        | £3.99 |
| 81542 | RJ45/DB25 M Modular Adapter - Blue .....        | £3.99 |
| 81543 | RJ45/DB25 M Modular Adapter - Black .....       | £3.99 |
| 81534 | RJ12/DB9 F Modular Adapter - Grey .....         | £3.99 |
| 81535 | RJ12/DB9 M Modular Adapter - Grey .....         | £3.99 |
| 81533 | RJ12/DB25 M Modular Adapter - Beige .....       | £3.99 |
| 81554 | RJ45 10-pin/DB9 F Modular Adapter - Grey .....  | £3.99 |
| 81555 | RJ45 10-pin/DB9 M Modular Adapter - Grey .....  | £3.99 |
| 81552 | RJ45 10-pin/DB25 F Modular Adapter - Grey ..... | £3.99 |
| 81553 | RJ45 10-pin/DB25 M Modular Adapter - Grey ..... | £3.99 |